

Study of the working process of a diesel engine using diesel fuel and methanol

A A Anfilatov and A N Chuvashov
Vyatka State Agricultural Academy

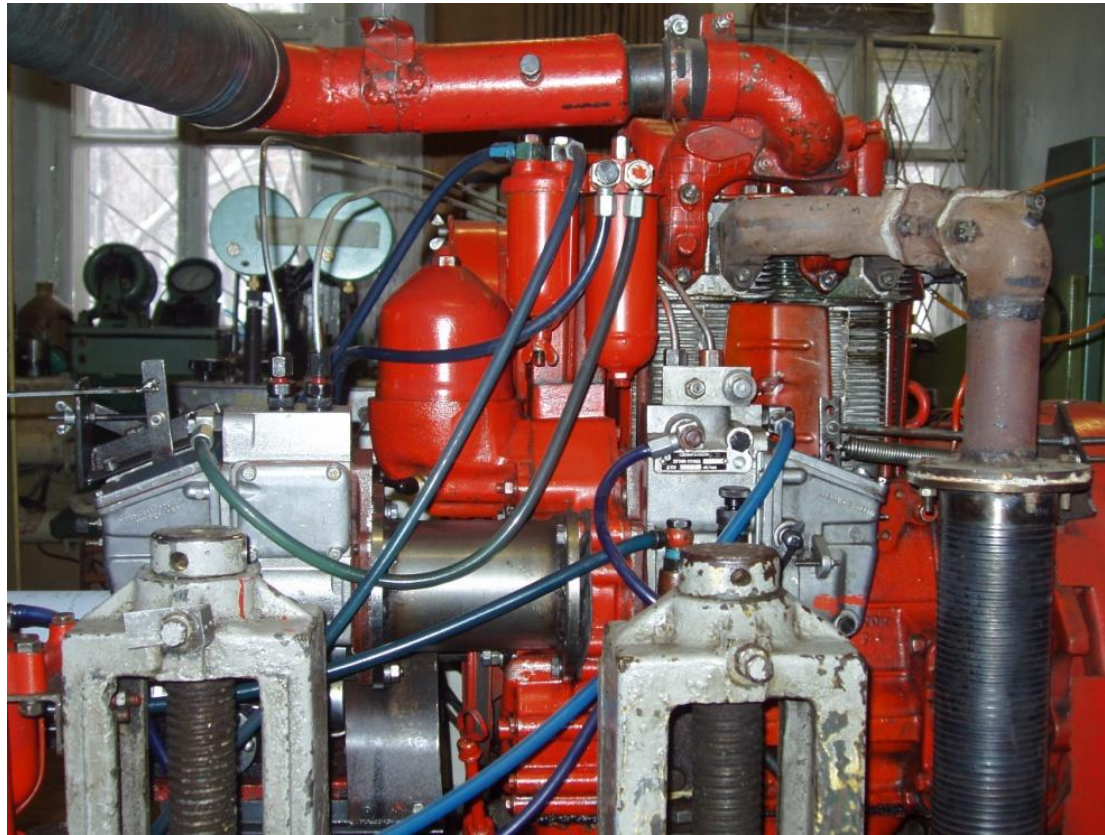


Figure 1. Tractor diesel engine mounted on the stand



Figure 2. Nozzles for supplying methanol (installed at the top) and diesel fuel (installed at the bottom)

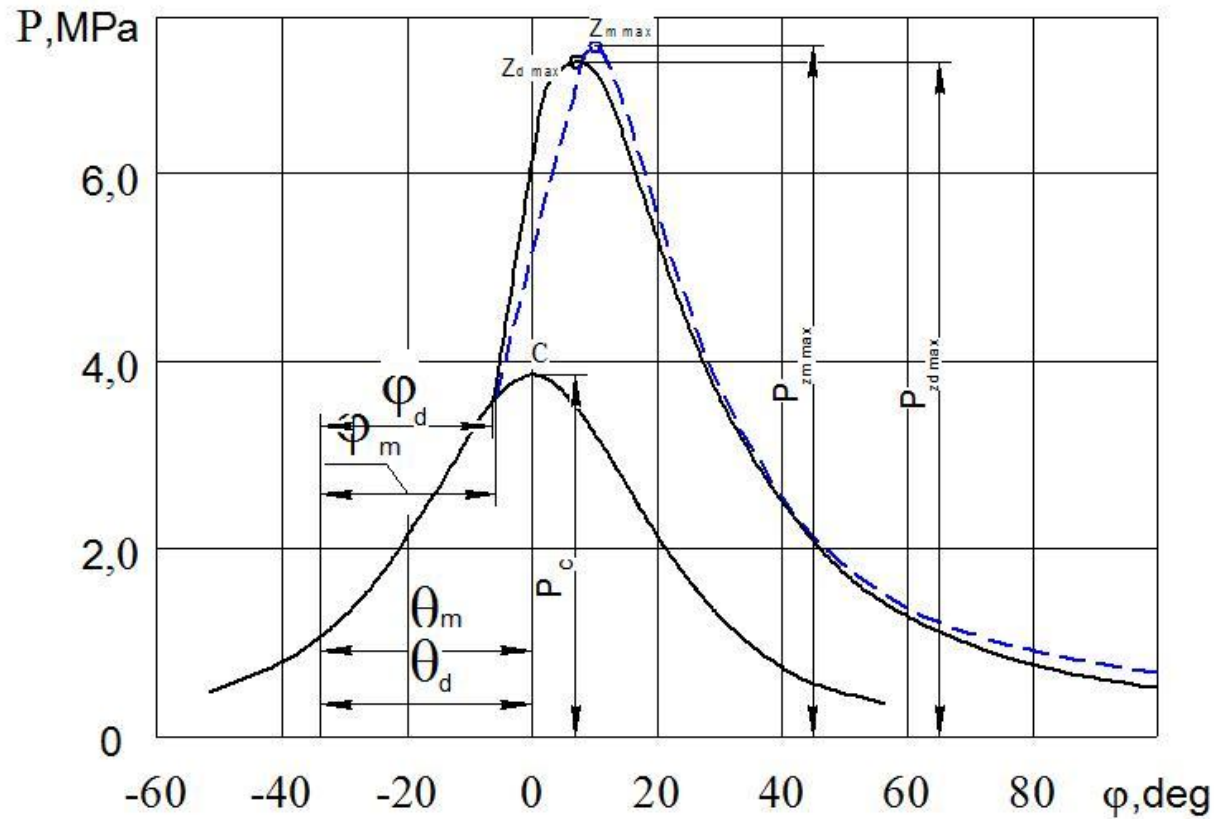


Figure 3a. Indicator diagrams of diesel engine 2H 10.5/12.0 when working on diesel fuel and methanol with separate feed with $n = 1800 \text{ min}^{-1}$

———— - diesel fuel, - - - - - methanol with separate feed

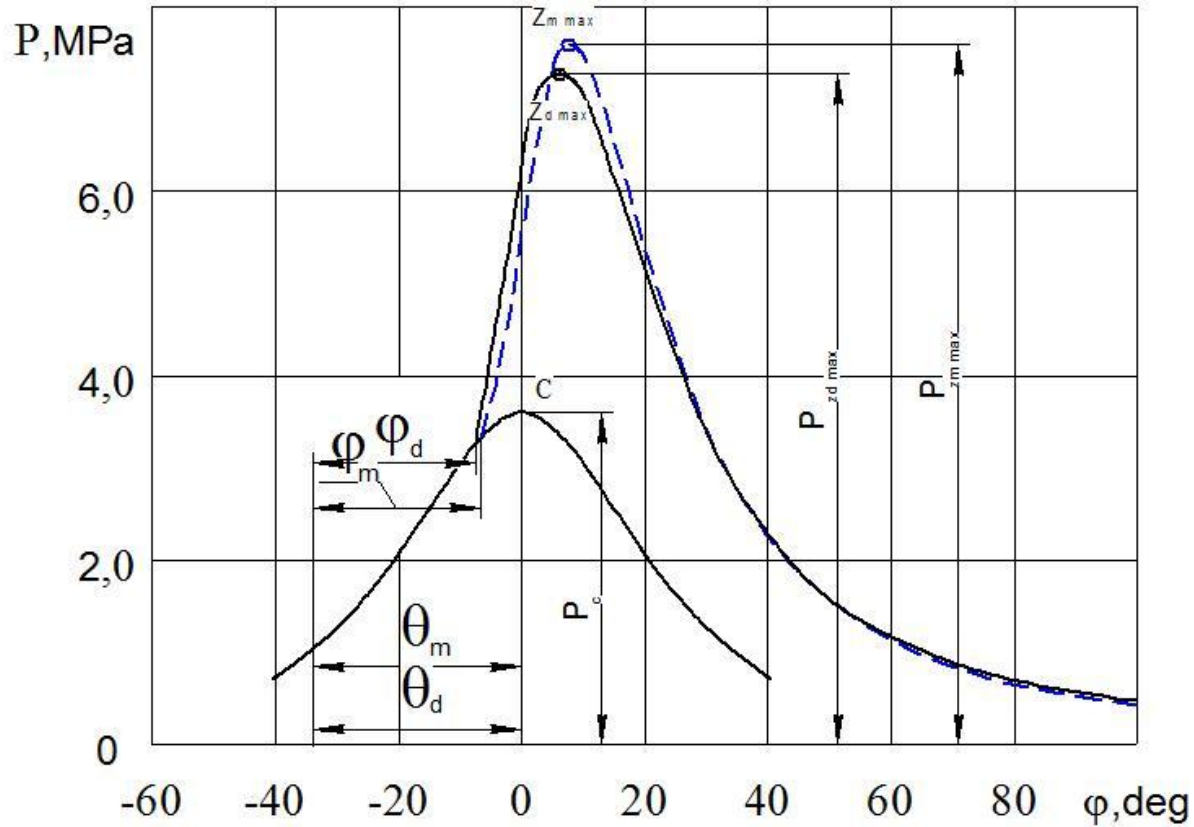


Figure 3b. Indicator diagrams of diesel engine 2H 10.5/12.0 when working on diesel fuel and methanol with separate feed with $n = 1400 \text{ min}^{-1}$

———— - diesel fuel, - - - - - methanol with separate feed