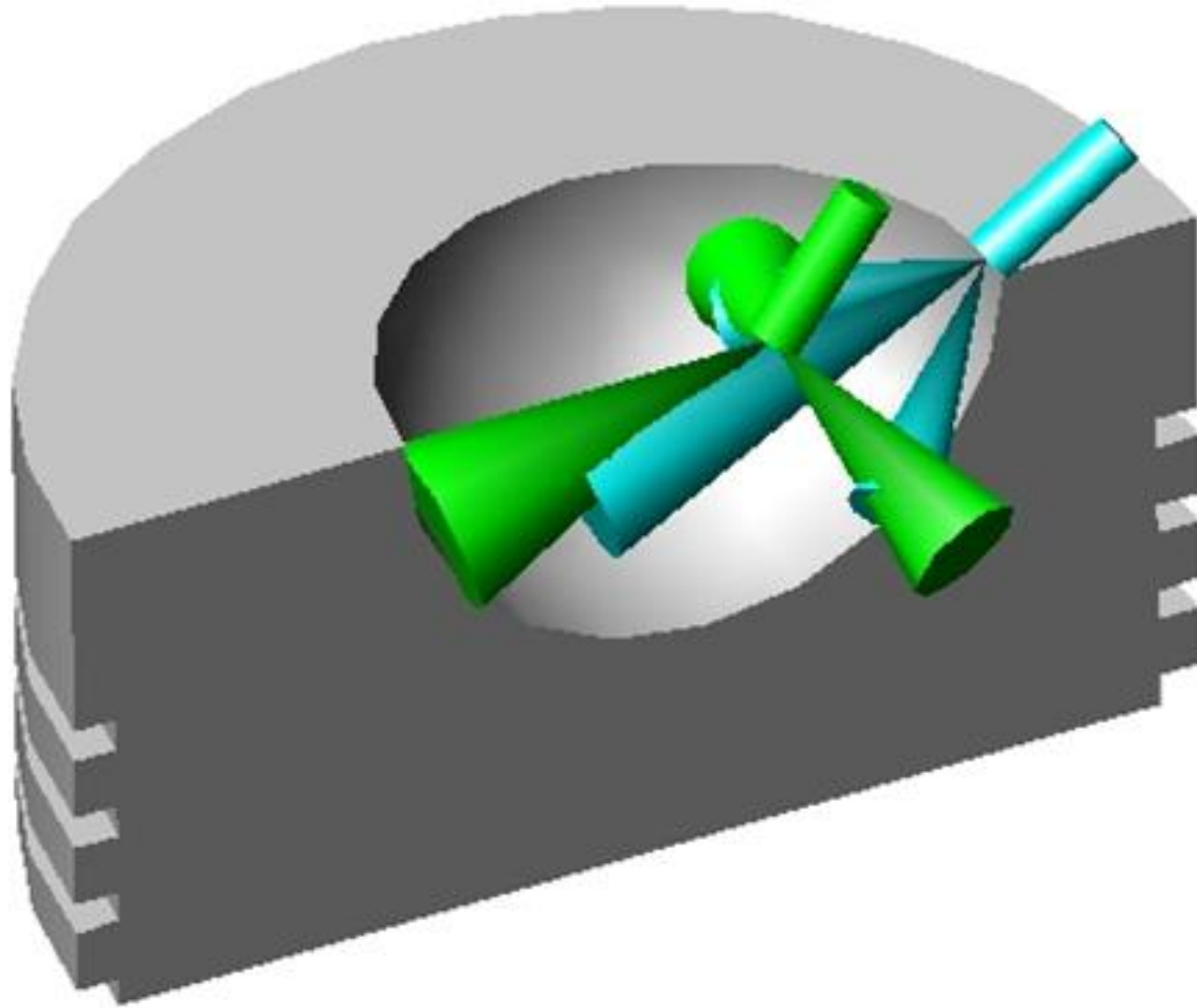


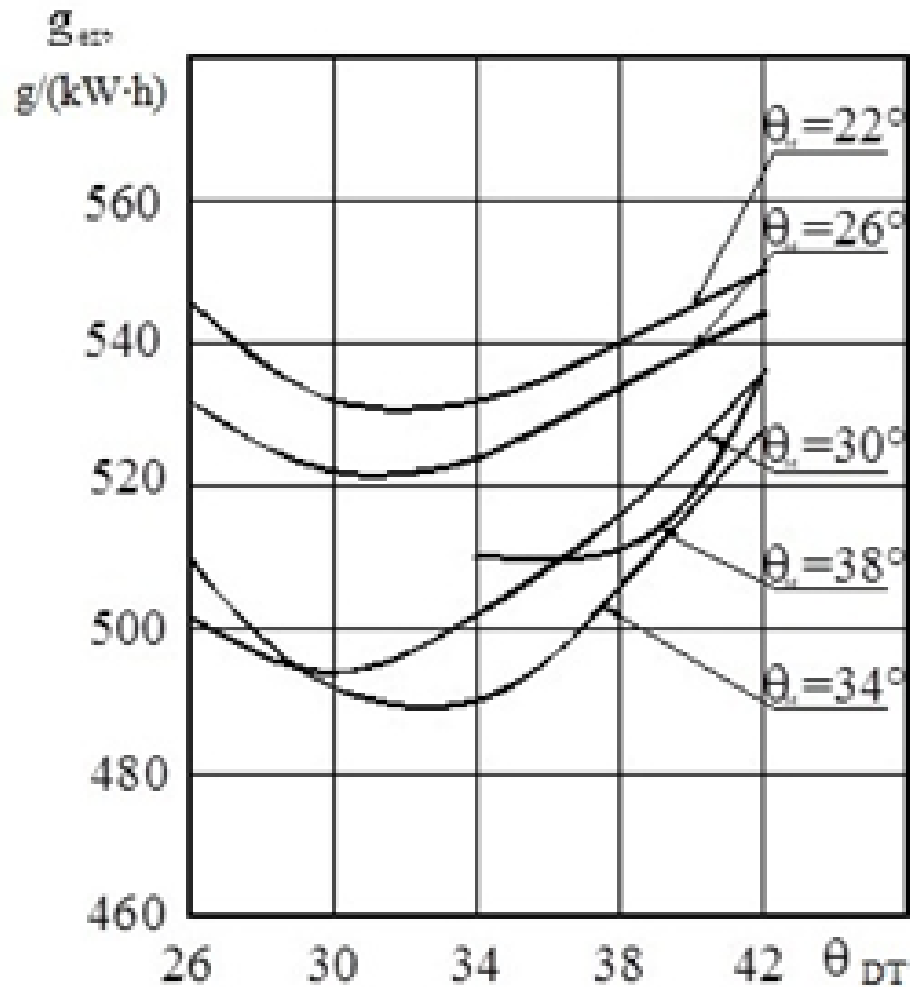


# **Analysis of indicators of the working process of diesel engine when operating on methanol**

**A N Chuvashov and A I Chuprakov**



**Figure 1.** Graphic representation of the intersection of DT and methanol torches in a diesel cylinder



**Figure 2.** Changes in economic indicators of diesel 2CH 10.5/12.0 at different installation angles of injection of DT and methanol at  $n = 1400 \text{ min}^{-1}$  and  $p_e = 0.594 \text{ MPa}$ .